



MSD

Louisville and Jefferson County
Metropolitan Sewer District

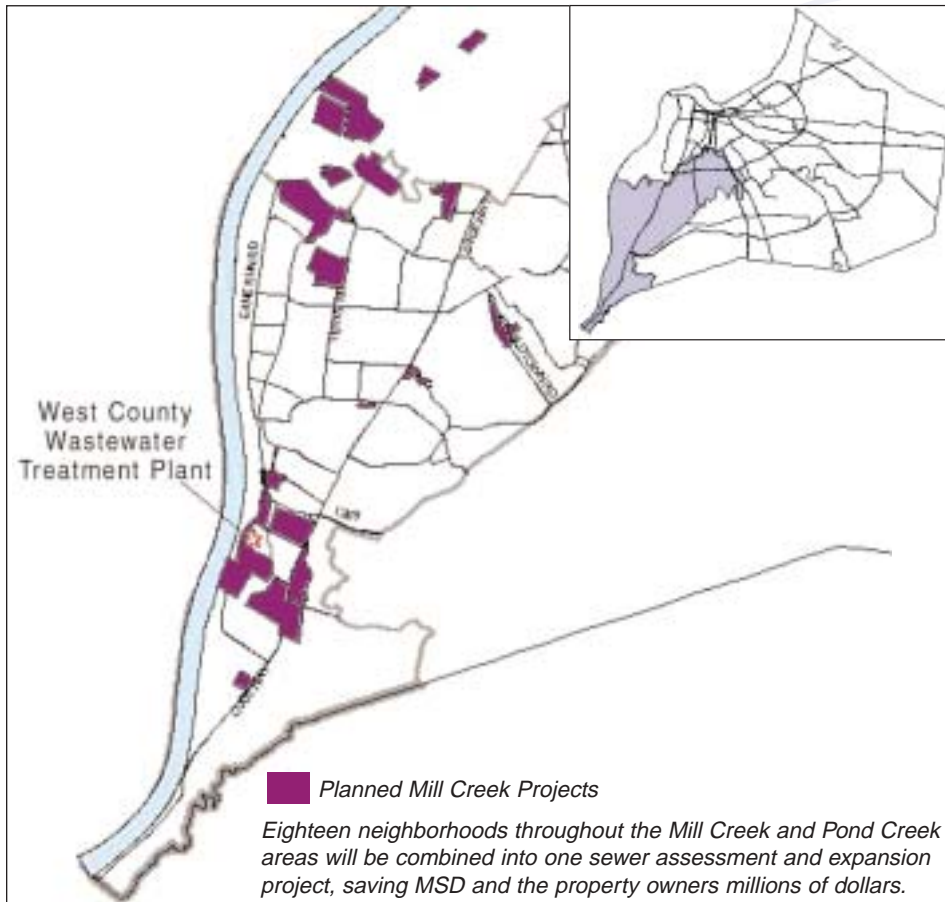
Update

News about activities and developments at MSD

August 14, 2002

Financing the dream *Saving time, money key to expansion plan*

Virus concerns addressed



Extending sewer lines to 3,483 new customers throughout southwest Jefferson County is challenging — and expensive.

By applying value management principles, MSD developed a plan to build 42 miles of sewer, connecting the remaining neighborhoods in the Mill Creek area to the MSD wastewater collection and treatment system. The plan saves money, takes less time and completes MSD's Mill Creek expansion that began in 1985.

First, the 18 neighborhoods — 17 in the Mill Creek and the Orell Road neighborhood in the adjacent Pond Creek area — were grouped under a single guaranteed maximum assessment project, streamlining administrative processes and saving time in the bidding cycle.

The Mill Creek team took on many pre-construction activities typically performed by consultants to hold down costs. Easement procurement was scheduled earlier during construction planning,

West Nile Virus is turning up in Kentucky again this summer. The good news is that MSD and the Jefferson County Health Department have already taken steps to control the problem and minimize the danger.

West Nile Virus affects a variety of vertebrate animals. While birds and mammals harbor the virus, mosquitoes are the primary transmitter. Initial reports of human infection in the U.S. came from New York in 1999. By 2001, the virus was found in mosquitoes, birds and horses in Kentucky. According to the Center for Disease Control, 34 states and the District of Columbia have reported the virus in animals.

(continued on page 3)

Area industry is seminar feature

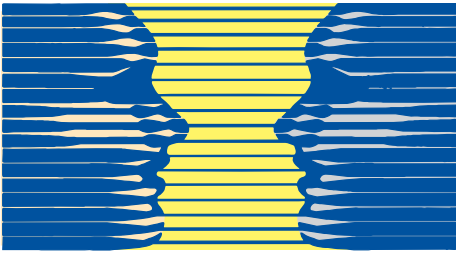
A special industrial seminar highlighting successful pretreatment programs at Louisville industries will be held August 28 at Executive Inn West.

"MSD operates one of the largest wastewater pretreatment programs in the southeast U.S.," says MSD's Industrial Pretreatment Manager Tom Spalding. The seminar will feature processes in place at local chemical, food production and transportation industries.

The goal is for industrial, environmental, health and safety, laboratory and regulatory compliance personnel to learn from the successful processes already in

(continued on page 3)

(continued on page 3)



Customer First at Work

Editor's note: Following are excerpts of customer comments.

"Within an hour of my sewer back up report, MSD's inspector arrived to review our situation and advised us not to call a plumber until MSD had examined the lines with TV equipment. That showed the stoppage was on our property. We then called a plumber and within a few minutes the stoppage was cleared. Thanks to MSD's **Ezell Smith** and **Don Riddle** for the prompt and valuable service."
—Earl Schaaf, St. Matthews, 40207

"Quest Engineers is honored to receive a **2002 DiverseWorks Champion** award. Diversity truly builds company strength and is good business!"
—Charlie Scroggin, Lexington, KY

MSD Milestones

Welcome to MSD:

- * **Robert Burkett**, Maintenance Electrician
 - * **Morris Byrd**, Maintenance Electrician
 - * **Eugene Downs**, Facilities Building & Grounds Laborer
 - * **Phillip Kirby**, Drainage Utility Trainee
 - * **Audrey Scott**, Benefits Specialist
- Congratulations on promotions:
- * **Clavon Armstrong** to Operator-in-Training
 - * **Jay Korfhage** to Maintenance Mechanic
 - * **Damon Rhodes** to Utility Worker III

Thanks for your service:

- * **Otis Pope**, Utility Leader, retiring 8/31

Area Team News Beargrass Creek Area

Sewer, erosion control projects to begin

The **second phase of sewer construction along Harold Avenue**, off Seventh Street south of Algonquin Parkway, will serve 112 properties. Phase one, completed in September 2000, installed sanitary sewers along Wallie Ann Court, portions of Wathen Lane, and along Harold and Adelia avenues.

Phase two will cost an estimated \$152,767.

Stablizing the banks of a section of Buechel Branch will **improve drainage and reduce erosion along Derby and Eldorado avenues** and Granvil Drive.

Buechel Bank runs along residential properties in the neighborhood, and eroding banks have put adjacent properties at risk for potential damage. Plans call for shoring up the banks with concrete walls and rock to direct water flow, reduce future erosion and create a more natural stream environment.

The project is estimated to cost \$145,193.

Wet Weather/Water Quality

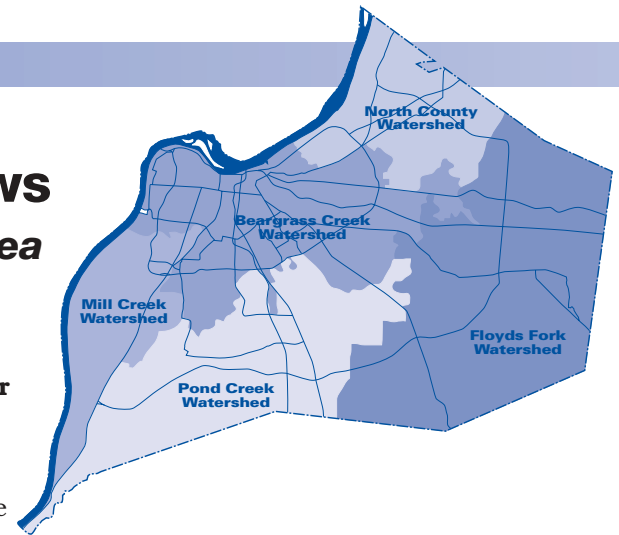
Greenway trail atop levee heads east

Jefferson County and MSD have partnered to extend a popular greenway trail east along the Ohio River toward downtown.

Funded mainly by a federal grant secured by Fiscal Court, the planned extension will begin on the levee at Greenwood Road Park and end at LG&E's Paddy's Run generating station. The planned path will veer off the levee when needed to avoid industries and to provide greater access to business and commercial areas.

Because MSD maintains the county's flood protection system, MSD will oversee construction of the trail and maintain sections built on the levee, floodwall and in public rights-of-way. The county will maintain parts all other parts of the trail.

The first phase of the trail, built in 2000, begins at Greenwood Road Park and extends west to Riverside, the Farnsely-Moremans mansion. It is part of the Ohio River Corridor Master Plan, which eventually would provide a riverside trail throughout Jefferson County.



Greenway trails, like this one at Roberson Run, protect the environment, help manage drainage areas and streams, and provide recreational opportunities in a natural landscape. The community's Ohio River Corridor Master Plan envisions a network of greenways connecting neighborhoods to recreational, business and commercial areas.

Financing the dream

(continued from front page)

ensuring key acquisitions were in place before crews were mobilized. Even public meetings for property owners in the 18 neighborhoods were held in a multi-day open-house format.

Accelerating the schedule also allows MSD to take advantage of tax incentives for construction in the expanded Enterprise Zone before they expire in 2003. That affects some costs for 14 of the projects.

Property owners in the to-be sewer areas agreed with the plan, voting to pay their share by a more than 68 percent margin.

Extending sewers also will remove thousands of septic systems and numerous package wastewater treatment plants and pump stations, which Acting Executive Director Bud Schardein says have contributed to stream and river pollution. "The environmental, real property and quality of life benefits are immeasurable."

Seminar

(continued from front page)

place. "Those who attend can gather information about pretreatment programs that work and apply them at their own companies," Spalding said.

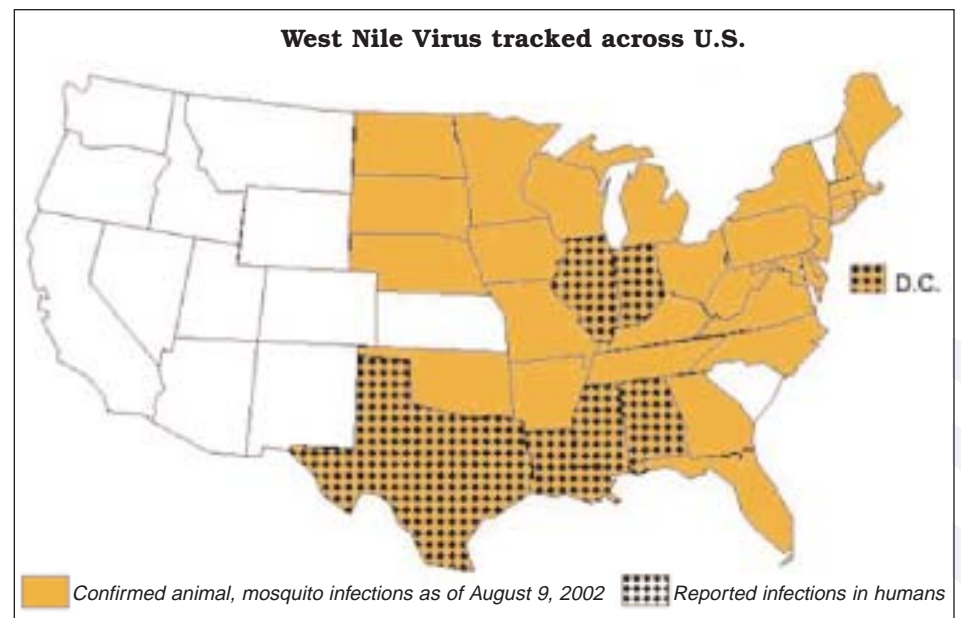
Rohm & Haas, Dupont Dow Elastomers, Kentucky Pollution Prevention Center, Swift, Airport Pollution Prevention Team and MSD are among seminar presenters. Tours are planned of MSD's new solids system at the Morris Forman Wastewater Treatment Plant, Engelhard Pigment's pretreatment facility and Louisville International Airport.

The seminar costs \$30 (lunch included) and begins with registration at 8 a.m. with presentations and tours lasting until 3:30 p.m.

To register, contact Peggy Burgin at 540-6514 or burgin@msdlouky.org. Registration forms are available online at MSD's home page, www.msdlouky.org.

Virus concerns

(continued from front page)



Kentucky is one of 34 states where birds, animals and mosquitoes are affected by the West Nile Virus. Only five states and Washington D.C. have reported the infection in humans. (Source: Centers for Disease Control and Prevention Web site)

Since mosquitoes are the virus's primary carriers, controlling them is critical. The Jefferson County Health Department mosquito control program, in place since 1958, includes treatment of standing water throughout the county. To eliminate breeding habitats, MSD has a cooperative agreement with the Health Department to treat 14,300 catch basins several times during mosquito contact season.

According to the Center for Disease Control, the probability of humans being bit by mosquitoes and actually getting sick from West Nile Virus is extremely low. If exposed to the virus, only about 20 percent of people exhibit any symptoms, which range from muscle weakness, headache, joint stiffness and pain, rash or weak fever.

About one in 150 infected people develop more serious symptoms, such as encephalitis or meningitis. Most severe cases are typically in people age 50 and over, and people with compromised immune systems. West Nile Virus illnesses that result in death are rare.

Keep mosquitoes away by:

- Eliminating any standing water on your property. Cans, bottles, bottle caps and tires can all harbor mosquito larvae long enough for them to hatch.
- Cleaning birdbaths and pet watering bowls daily.
- Inspecting gutters for clogs and standing water.
- Making sure screens on windows and doors fit tightly.
- Wearing repellent and loose-fitting long-sleeved pants and shirts when outside.



MSD

Louisville and Jefferson County
Metropolitan Sewer District

700 West Liberty Street
Louisville, KY 40203-1911
502-540-6000
www.msdlouky.org

Numbers to know:

24-hour Customer Service: **587-0603**

Speech- and hearing-impaired customers call: **540-6233**

Inside Update

- Time, money savings key to Mill Creek expansion
- Pretreatment seminar to showcase local innovations
- Nation buzzing about West Nile Virus
- Ohio River Levee Trail to extend toward downtown

Team makes highlights at annual Brightside volleyball classic

The MSD Diggers didn't bring home a trophy, but the team helped raise money and provided a tournament highlight during the 13th Annual Operation Brightside/Coca-Cola Volleyball Classic July 20–21.

Diggers **Robin Bowling, Kevin Bright, Steve Emly, Maggie Happle, Kim Loechle, Jennifer Shartzer, Jason Wade** and **Brad Walker** showed grace and mastery on the Waterfront Park courts, losing game one, winning game two and losing game three in the double elimination tournament.

The tournament highlight came in MSD's closely contested first game when MSD Spikemeister **Kevin Bright** blasted the ball out of play, over the fence onto a busy I-64 ramp. No freeway injuries resulted from the incident, but several Diggers reported sore muscles and bruised egos.

Mayor Dave Armstrong called this year's classic, "a great success."

Upcoming Events

August 26

MSD Board meeting, 10 a.m.,
700 W. Liberty, first floor

August 27

Public meeting, Kramers Lane
North Sewer Project Phase 2,
7 p.m., Southwest Government
Center, 7219 Dixie Hwy

August 28

Industrial Pretreatment Seminar,
Executive Inn West, contact
Peggy Burgin (540-6514,
burgin@msdlouky.org) to register.

September 2

Labor Day Holiday, MSD offices
are closed. For 24-hour service
phone 587-0603.

© COPYRIGHT 2002

Louisville and Jefferson County Metropolitan Sewer District
LOJIC map data copyrighted by the Louisville and Jefferson County Metropolitan
Sewer District and the Louisville Water Company
All Rights Reserved