

## Hite Creek expansion to meet community needs

MSD has chosen Judy Construction Co./Quest Engineers to design and build a capacity expansion at the Hite Creek Wastewater Treatment Plant in northeastern Jefferson County.

When work is finished in late 2004, the plant's capacity will be increased from 4.4 to 6 million gallons a day.

The process of selecting a contractor and developing a plan for the expansion began early in 2002. Three teams that had filed qualifications statements were chosen to develop base proposals based on MSD's project specifications. When costs for all three base proposals exceeded MSD's budget for the plant's expansion, MSD reduced the expansion capacity from 8 to 6 million gallons a day, according to Morris Forman Area Team Leader Saeed Assef.

The decrease in treatment capacity presented opportunities to further reduce costs as the scope of work was defined. New secondary clarifiers will be smaller and will be relocated, slashing the yard and process piping required for more savings. Existing equipment in the influent pump station will be replaced instead of constructing a new facility. Existing primary clarifiers will be converted to aeration basins, and existing sludge storage tanks won't be replaced with new ones.

These and other changes cut the project's cost by several million dollars, with the construction cost limit now set at \$10.7 million.

Assef said the design-build process has consistently helped MSD get the most from its construction dollars. "Design-build encourages a more creative approach to construction that generally saves both time and money," he said. "Working through the process yielded a plan that still meets the community's needs within our budget."



Expansion of the Hite Creek plant will allow the treatment of an additional 1.6 million gallons of wastewater per day.

*continued on page 3*

*"Design-build encourages a more creative approach to construction that generally saves both time and money."*

### CONNECT WITH MSD

502-540-6000

24/7 Customer Service:  
587-0603

[www.msdlouky.org](http://www.msdlouky.org)

TDD/TTY: 540-6233

En español: 540-6423  
(Entre 8 mañana y 5 p.m.  
lunes a viernes)

## Ohio River Sweep rescheduled

High water and swift currents from recent rains have delayed the 15th annual Ohio River Sweep until Saturday, July 12. The time remains the same, from 9 a.m. to 2 p.m. The original date was June 21.

More than 15,000 people are expected to sweep more than 1,800 miles of riverbank in six states. Last year in the Louisville Metro area some 350 volunteers collected more than 30 tons of debris including tires, appliances and trash.

For details about the Ohio River Sweep or to volunteer, contact MSD's **Becky Bennett** at 540-6552.



**MSD**

## Upcoming Events

June 25

**Preconstruction meeting, East Pages Lane Sewers, Pages Lane Drainage, MC-1C Sewers, and North and South drives Drainage,**  
7 p.m., Southwest Government Center, 7219 Dixie Hwy

June 30

**Public meeting, Sylvania/Rutledge Sewer Project,**  
7 p.m., Southwest Government Center, 7219 Dixie Hwy

July 3

**DiverseWorks Orientation,**  
9 a.m., 700 W. Liberty, first floor

July 4

**Independence Day holiday, MSD offices are closed.**  
For 24-hour customer service phone 587-0603

July 10

**MSD Retirees Summer Picnic,**  
11 a.m., details are in the mail

July 12

**Ohio River Sweep rescheduled from June 21.** For details contact Becky Bennett, 540-6552

July 14 and 28

**MSD Board meeting,**  
10 a.m., 700 W. Liberty, first floor

## Certifiable Success

DiverseWorks for these recently certified businesses:

**The Cubero Group (MBE)**  
*Graphic design, advertising and marketing services*  
Contact: Henry Cubero, 502/561-1345

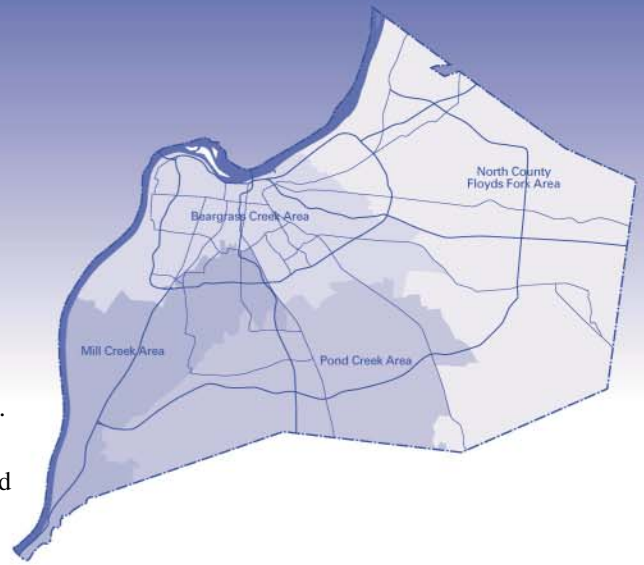
**Gonz Consulting, Inc. (MBE)**  
*Project management, program controls and safety health services*  
Contact: David Gonzalez, 502/296-7069

**Hagerty Engineering (WBE)**  
*Geotechnical engineering, environmental consulting and construction materials testing*  
Contact: Peggy Hagerty Duffy, 812/284-3942

## Beargrass Creek

Drainage improvements planned for **Donna Road** should eliminate standing water between properties at 2422 and 2423 to Savage Drive, and along Dover Road between Donna Road and Luckett Avenue. Paved roadside swales and piped driveway aprons will be installed at a cost of \$67,303.

Roadside improvements are planned for **Dulworth Drive and Edgin Avenue** as part of Project DRI, the partnership between Louisville Metro government and MSD to ease the community's most pressing drainage problems. Plans call for installing roadside paved v-swales and piped driveway apron replacements to reduce standing water along Dulworth between Savage Drive and Dover Road and in the 4200-4300 blocks of Edgin Avenue. The project will cost \$134,567.



## Mill Creek

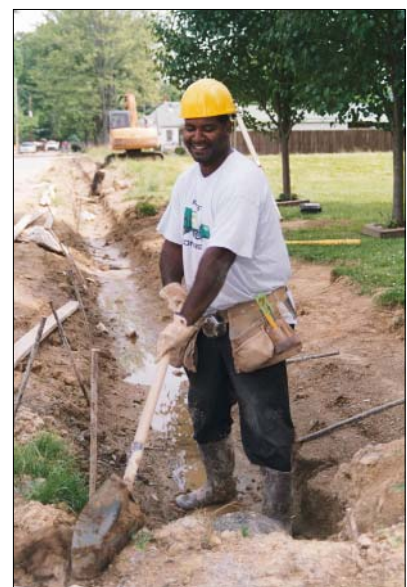
Minimizing yard flooding is the goal of the Project DRI drainage improvements planned for **Deavers Avenue and Lone Oak Trail**. Yard drain inlets and drains will be constructed at a cost of \$62,730, impacting 23 properties and responding to a dozen customer service requests.

Project DRI will bring drainage relief to 100 properties along **Thomas and Graston avenues** at the same time sanitary sewers are extended to the **Briargate neighborhood**. Some 568 properties will be connected to sewer service with construction of about four miles of sewer, and nearly five miles of drainage improvements will address 45 customer requests. Combined, the projects will cost \$3.1 million and be completed in the summer of 2004.

Sewer service will be extended along with Project DRI improvements along **Sylvania and Rutledge roads**. Nearly four miles of sewer will be constructed to serve 336 properties. More than two miles of drainage improvements in rear yards will benefit 75 properties and address 30 customer requests. The project will cost \$2.4 million and take more than a year to complete.

The **Mill Creek (MC-1C) Sewers** will be constructed with a drainage improvement project along **North and South drives**. When completed by mid-2004, 174 properties in this area south of Greenbelt Highway will be connected to sanitary sewer service. About two-and-a-half miles of drainage improvements will positively affect 80 properties and address 42 service requests. Cost for both projects, including the drainage improvements that are part of Project DRI, is about \$1.5 million.

*continued on page 3*



*Project DRI at work on Greenwood Ave.*

## Mill Creek... *continued from page 2*

Properties along **East Pages Lane** will see sewer construction and drainage improvements near the Dixie Highway intersection. When completed later this year, 23 properties will be connected to sanitary sewer service and roadside improvements will promote drainage on more than 20 properties, addressing 13 customer requests. Combined the projects will cost more than \$430,000. The drainage component is part of Project DRI, the partnership between Louisville Metro government and MSD.

## Pond Creek

Thirty-two business and residential properties in the **Bardstown Road corridor** will soon be connected to sanitary sewer service. Located in the Fern Creek area, the project will cost \$882,758 to construct. The work should be completed later in 2003.

## Hite Creek... *continued from page 1*

The expansion is expected to soon be underway and take more than a year to complete. Cynthiana-based Judy Construction Co. has completed other wastewater treatment plant work for MSD, including the expansion of the Cedar Creek plant and the design-build of the Floyds Fork plant.

Hite Creek Wastewater Treatment Plant was built in 1970 with a capacity to treat 4.4 million gallons of wastewater a day. The plant is located on Hitt Lane near I-71 and the Jefferson-Oldham county line.

## Home purchases part of flood reduction strategy

A \$4.5 million Hazard Mitigation Grant from the Kentucky and federal emergency management agencies will help MSD purchase and remove homes that are prone to flooding.

Already MSD has identified 69 homes located in floodplains and floodways throughout Louisville Metro that meet other grant criteria including history of damaging floodings, location adjacent to major creeks and location in an area strategic to MSD's plans for flood control and watershed restoration.

Property owner participation is voluntarily, according to Engineering Director Derek Guthrie. "Our intent is to remove homes from the floodplain and prevent future damages."

Once properties have been purchased, structures will be demolished and MSD will test the sites for lead, asbestos and other hazardous materials. Then the properties may become part of MSD's future flood reduction projects. "All of the properties identified have potential for future projects or can be restored to the natural function of the floodplain," Guthrie said.

MSD worked with federal and state agencies for more than two years to secure the grant, which is enough to purchase 56 properties and elevate one home. To purchase the additional 12 properties identified, MSD has earmarked \$1.5 million.

Guthrie said the grant allows one year to complete the purchase and demolition of the properties.



*Sixty-nine properties throughout Louisville Metro's floodplains and floodways that suffer frequent flood damages have been marked for purchase under a grant from federal and state emergency management agencies.*

## Customer First at Work

"My compliments to **Darrell Goodwin** who responded to my backup request. He and his crew did a great job."

--Heidi Ferguson, McNeely Lake, 40229

"Thank you for the fine job done by **Steve Bodner, Lloyd Dezarn and Damon Kelty** on the drainage work. They were cooperative, respectful and watchful of the kids when they were around. Thanks for the job well done!"

--Mrs. Francis Clements, Sr. and the residents of Blue Ridge Court, Anchorage, 40223

"We'd like to express our gratitude for the outstanding job **Rick Bledsoe, Tim Durham, Dewayne Edwards, Mike Wilcox and Bobby Wilson** did on our drainage problem. We're totally satisfied with the results."

--Gene and Shirley Janssen, Valley Station, 40272

"I appreciate the fine work done in repairing the cave-in on my property. **Mike Turner and crew** were courteous and knew what they were doing."

--Melvin Sublett, Jr., Highview, 40228

"Thanks to **Barry Bivins, Brian Britt, Derrick Eddins, Larry Gardner, Paul Rock and Carl SooWoo** for completing the backup repairs and driveway restoration on my property."

--Glenn Hardin, Churchill Downs, 40215

"Thanks to the crew that recently worked on my property. The work performed was excellent, and the crew was concerned about my personal property and needs."

--Edward Zimmerman, Shively, 40216

## MSD MILESTONES

Welcome to MSD:

**Robin Burch**, Quality Assurance Coordinator

**Charles Hamilton**, Operator-in-Training

Changing the pace:

**Janice Lewis**, to Customer Service

You'll be missed:

**Randy Bent**, retired June 1



# MSD

Louisville and Jefferson County  
Metropolitan Sewer District

700 West Liberty Street  
Louisville, KY 40203-1911



Printed on 30% post-consumer  
content paper

**© COPYRIGHT 2003**  
Louisville and Jefferson  
County Metropolitan Sewer  
District. LOJIC map data  
copyrighted by the Louisville  
and Jefferson County  
Metropolitan Sewer District  
and the Louisville Water  
Company. All Rights Reserved.

## Changes in the air at West County plant

A yearlong \$2.4 million odor reduction project at the West County Wastewater Treatment Plant is nearing completion.

The project was developed in response to air monitoring studies at the plant and surrounding area, and concerns raised by plant neighbors. The odor control system is designed to capture and treat odors before they drift offsite, reducing plant odor by 96 percent.

Work on the plant's worst odor sources already has been completed, including a carbon adsorber to treat wastewater odor from the screening building, a biofilter to treat aeration and influent channel odors and aluminum covers over influent channels and aeration basins. Also, fine bubble diffusers have been added to aeration basins and the grit system to dispel odors. A duct system has been installed to move odors from the covered areas to the biofilter, which treats the air before it is released.

In fall 2002, the project was expanded to include noise control features after studying noise from the plant in the surrounding area. Construction of sound controls for the blower that moves air from the biofilter is well underway.

Located on Lower River Road south of Moorman Road, the West County plant has been in service since 1986. Future plans call for the plant to have the capacity to treat up to 30 million gallons of wastewater a day.



*Addition of noise control features on the biofilter blower is underway at the West County plant.*



*Ductwork moves odor from covered channels to a biofilter. In aeration basins (right) fine bubble diffusers have been installed to help reduce odors.*

## Planning for worst is best for customers

Moving wastewater through the sewer system to treatment plants takes more than gravity. Throughout Louisville Metro pump lift stations help keep wastewater moving.

When rainstorms strike and power outages occur, the pumps stop working and may cause wastewater to back up into homes or discharge into nearby drainage channels.

The solution to preventing backups in homes and protecting streams, according to West Region Maintenance Manager Jim Dixon, is installing automatic switches over the junction box at each lift station. "That allows us to connect a portable generator to the junction box and power the station back up," Dixon said.

Portable generators only take about 15 minutes to set up and, unlike vactor trucks that had been used to pump out lift station wet wells, the generators have large fuel tanks and can operate for longer time periods.

Each junction box is equipped to prevent electricity from filtering back to the electric company crews working to restore power, and the generator goes off line when power is restored.

The first of four units in the West Region has been installed on Jacks Lane off Ralph Avenue. Others will be installed at stations on Pioneer Road, Fern Lea Road and Sonne Avenue—all flood-prone areas, Dixon said. Similar units also may be installed in the Central and East regions.

"We try to think ahead to eliminate problems," Dixon said. "That way our customers don't have to call and complain."



*West Region Maintenance Electrician Steve Robbins tests a recently installed junction box on Jacks Lane.*

*"We try to think ahead to eliminate problems. That way our customers don't have to call and complain."*

## Partnership yields long-term solution

When Louisville International Airport expanded and residences nearby were relocated to the Heritage Creek subdivision off Cedar Creek Road, the Regional Airport Authority and MSD created plans to provide sewer service.

That included building a temporary pumping station to move wastewater from 300 homes to MSD's Cedar Creek Wastewater Treatment Plant. For the long term, a larger pump station was planned to serve the area's present and future needs. Under the agreement with the Regional Airport Authority, MSD and the Authority planned to split the anticipated \$2 million cost.

When a developer approached MSD about building the 130-home Hidden Valley Ranch subdivision next to Heritage Creek, the developer asked if the temporary pump station could be expanded to also serve the new subdivision.



**MSD**

*continued on next page*

*“Our organization is focused on promoting and recognizing unique, outstanding public works projects in all areas.”*

## Biosolids project earns state public works award

The Kentucky chapter of the American Public Works Association has recognized MSD’s alternative solids process with its top environmental award. Morris Forman Wastewater Treatment Plant Area Team Leader Saeed Assef accepted the honor at the chapter’s annual meeting June 19.

“Our organization is focused on promoting and recognizing unique, outstanding public works projects in all areas,” said Louisville Metro Engineer Mark Adams, who is the Kentucky chapter’s treasurer. “The alternative solids process at the Morris Forman plant is the type of public works project that we like to make more people aware of because it has so many benefits.”

APWA has about 300 members in Kentucky. Each year the group recognizes outstanding public works projects in emergency/disaster preparedness, environment, historical restoration/preservation and transportation and structures.

Winning the state honor means the MSD project will be considered for a national award at APWA’s annual meeting this August in San Diego.



## Partnership... *continued from previous page*

According to Development Team Leader Randy Stambaugh, that question opened negotiations for construction of a new, larger pump station to not only serve Heritage Creek and Hidden Valley Ranch, but also the entire area for the next 20 years.

The agreement shows how private-public partnerships can create solutions to meeting the community’s needs. “The temporary pump station was never intended to last for the long-term, and the area built out more rapidly than a new regional pump station could be constructed,” Stambaugh said.

By working with the developer, Regional Airport Authority and MSD plant operations and legal personnel, Stambaugh said the plan achieves the goals of getting infrastructure in place rapidly and economically. “This is a different approach to building wastewater systems that not only meets the schedule and immediate needs, but also will serve the Cedar Creek area for years to come.”



# MSD

Louisville and Jefferson County  
Metropolitan Sewer District

700 West Liberty Street  
Louisville, KY 40203-1911

502-540-6000

24/7 Customer Service:  
587-0603

[www.msdlouky.org](http://www.msdlouky.org)

TDD/TTY: 540-6233

En español: 540-6423  
(Entre 8 mañana y 5 p.m.  
lunes a viernes)



Printed on 100% post-consumer  
content paper